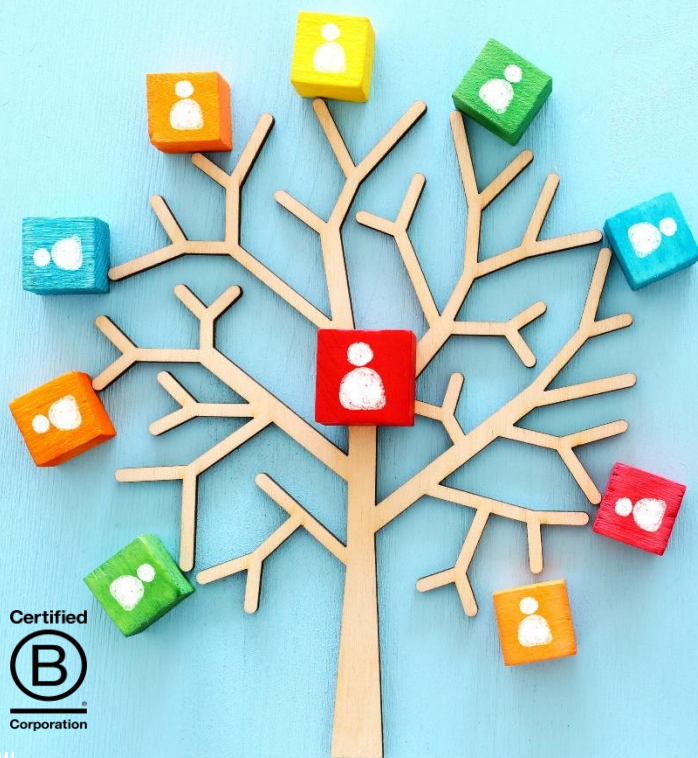


# New for 2025



## COURSES

### HARASSMENT IN THE WORKPLACE

Tuesday 4<sup>th</sup> February 9.30 am – 1.00pm

Thursday 6<sup>th</sup> March 1.30pm – 5.00pm

### NEURODIVERSITY AWARENESS

Tuesday 14<sup>th</sup> January 1.30pm – 5.00pm

Wednesday 26<sup>th</sup> February 9.30am – 1.00pm

### MENTAL HEALTH AWARENESS

Wednesday 29<sup>th</sup> January 9.30 am – 1.00pm

Tuesday 25<sup>th</sup> March 1.30pm – 5.00pm

### EQUALITY, DIVERSITY & INCLUSION

Tuesday 25<sup>th</sup> March 9.30am – 1.00pm

**£375 per 1st delegate  
(this includes the  
training package) - any  
additional delegates  
£85.00 each per company.**

## HALF DAY SESSIONS FOR MANAGERS WITH THE MATERIALS AND TOOLS TO DELIVER ACROSS YOUR ORGANISATION.

#### For Harassment in the Workplace:

- Slide deck for a 1-hour in-house training session for you to deliver across your organisation.
- Slide and information to incorporate into your onboarding process.
- A manager's guide for dealing with harassment complaints.
- Review of your current harassment and bullying policy.
- Harassment risk assessment tools including working examples and guidance.

#### For Neurodiversity Awareness:

- Neurodiversity Tool Kit for managers – manager's guide for making reasonable adjustment.
- Slides and information to incorporate into your onboarding process.
- Review of your current Mental Health in the Workplace (or similar) policy.
- Individual work preference assessment form for those with neurodivergences.

#### For Mental Health Awareness:

- Slide deck for a 1-hour in-house training session for you to deliver across your organisation.
- Slide and information to incorporate into your onboarding process.
- Return to work tool kit.
- Review of your current Mental Health in the Workplace (or similar) policy.
- Wellbeing action plan for managers and employee 1-2-1's